

# Twin Blade Power Series

Precision Adjustable Hole Cutter with  
Dust Collecting Safety Shield



www.holepro.com

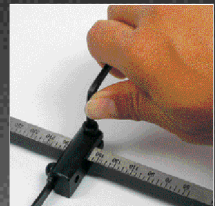
## MODEL POWER X-305

TWIN-BLADE REPLACEABLE

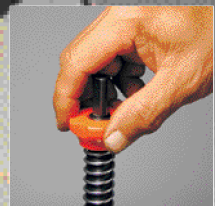
Cutting diameter: 17/8" to 12"



Patented collector shield has slots that trap dust particles and shavings.



Easy to change cutting diameter or attach new blades.



Depth control knob for quick changes to cutting depth.



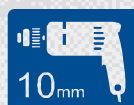
### Spare Blades:



**BH-002**  
High speed steel



**BT-002**  
Tungsten carbide steel



3/8" SHANK  
for POWER-DRILLS

**New World-Wide Patent**

# MODEL POWER X-305

T W I N - B L A D E S R E P L A C E A B L E

## Important Information

### Features

- Quick precise cutting of holes in ceilings, walls, and floors
- Impact resistant dust shield traps shavings to improve working conditions and make for faster job site cleanup
- With its twin blade holders there are no balance bars to change or threaded ends to strip or break off.
- Ball bearing design and high quality materials for durability
- Graduation marks are permanently etched into the plated measure bar
- Easily change blades (HSS or tungsten carbide) to maintain cutting performance
- Minimal edge contact greatly reduces stalling and kickback
- Sturdy plastic carry case for hole cutter, dust shield, wrenches, and spare blades

### Capacity

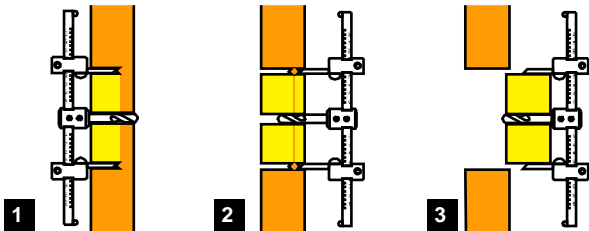
Cutting diameter: 1 7/8" (48mm) - 12" (305mm)

Thickness: 3/16" (5mm) - 2" (50mm)

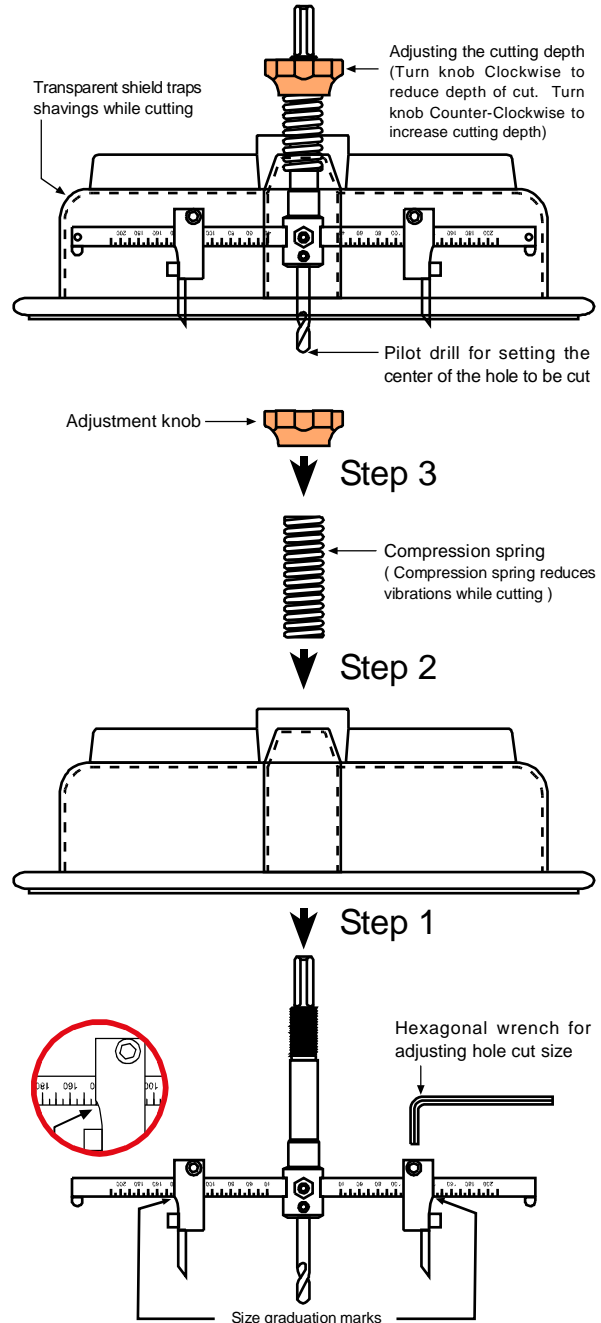
Materials cut: veneer, plywood, OSB, drywall, lathe & plaster, acrylic sheet, fiber cement board, etc.

### How to use POWER X-305

1. To adjust the hole size locate the inner edges of the blade holders against the size graduation marks. For example number "6" for a 6" diameter hole.
2. Set two blade-holders at the desired graduation on the measure-bar and firmly tighten the hex-screws.
3. Start boring after setting the twist-drill at the center of the desired hole. By having the dust shield in contact with the work surface the hole cutter will provide a straight cut with little chance for kickback, a common problem with conventional cup-style hole saws.
4. When deep boring 1 3/16" (30mm) up to maximum of 2" (50mm) is desired, use the "POWER X-305" hole cutter to start the hole from one side of the work piece, and then start boring again from the other side until the cutting blades bore through the hole making a doughnut-shaped disc, as shown in figure 1., 2., and 3.



### Direction for use



**HOLE PRO™ "the builders choice"**  
Imported by Lightsmith Inc.  
Ordering: [sales@holepro.com](mailto:sales@holepro.com)  
Tel: 831-663-1100  
Fax: 831-663-3004  
Website: [www.holepro.com](http://www.holepro.com)