

# MODEL POWER X-305



**WARNING !** ALWAYS read and follow the operating and safety instructions in the power tool manual and instructions for its use. ALWAYS wear safety goggles, gloves and other appropriate safety items for protection.

## Relative operating speeds:

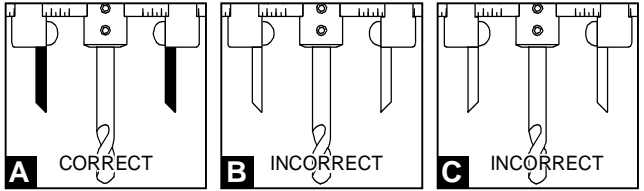
Hole Diameter	Power-Drill Speed
1 7/8" - 1 1/4" (48~59mm)	800 r.p.m
2 5/16" - 3 1/8" (60~79mm)	600 r.p.m
3 1/8" - 3 7/8" (80~99mm)	400 r.p.m
3 15/16" - 4 5/8" (100~119mm)	200 r.p.m
4 5/8" - 12" (120~305mm)	100 r.p.m

## CAPACITY

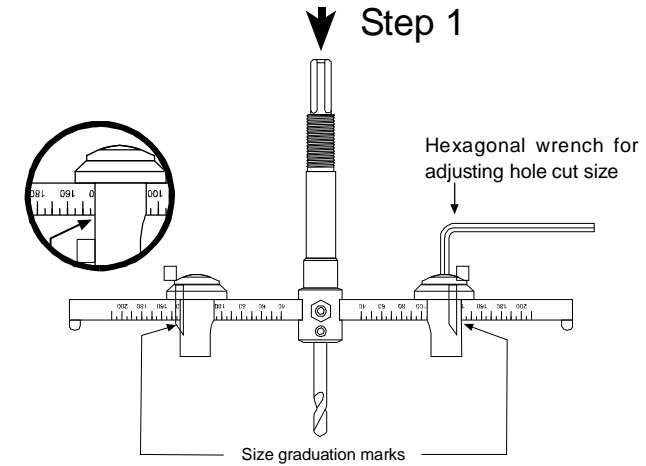
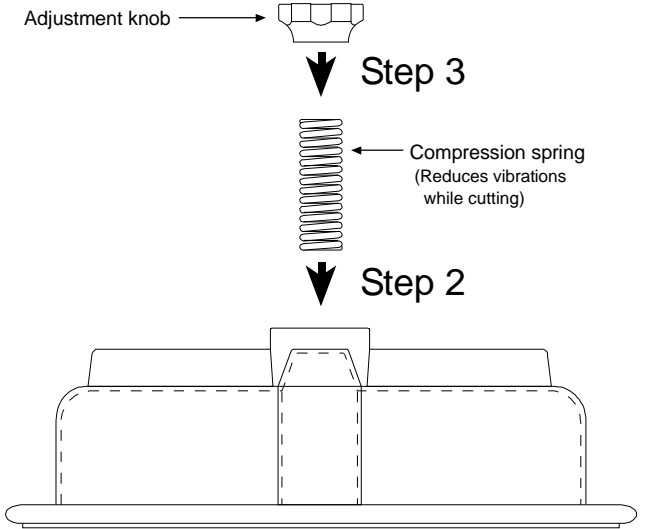
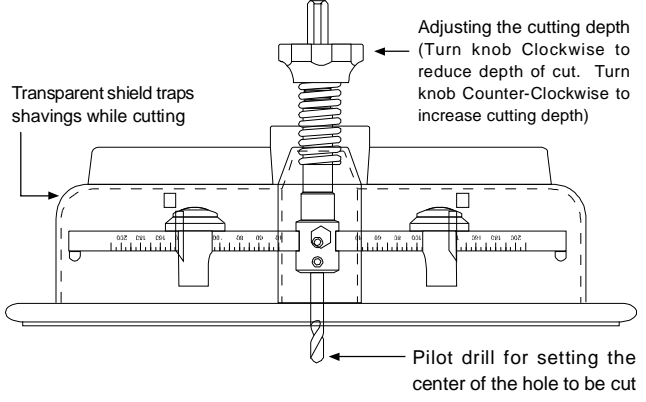
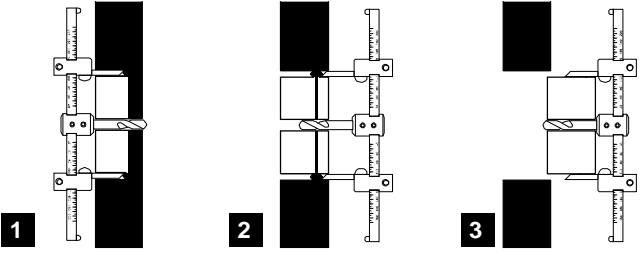
1. For cutting round holes in ceilings, walls and floors.
2. Cuts holes with diameter: 1 7/8" - 12" (48~305mm)
3. Cutting Depth: 3/16" - 1 1/8" (5-30mm) from one side only
4. Cuts aluminum and brass to 20 gauge (1mm)
5. Cuts veneer, plywood, gypsum-board, plaster, acrylic sheet, fiber cement board, etc.

## How to use the POWER X-305

1. Set both cutting-blades on blade-holders tightly and correctly as shown in Figure A. Figures B and C are INCORRECT.



2. To adjust the hole size locate the inner edges of the blade holders against the size graduation mark. For example, set each blade holder at number '3 1/2' for a 3 1/2 inch (90mm) diameter hole.
3. Set the two blade-holders at the desired graduation mark on the measure-bar and tightly screw in the hex-screws using the L-shaped hexagonal wrench.
4. Before cutting, securely clamp the piece to be cut, then start cutting after carefully setting the twist-drill at the center of the desired hole. When using a power-drill, be sure to align the hole cutter so that both blades start cutting at the same time, and gradually cut through the work piece. Abrupt contact of the blades with the work piece may cause the drill to stall or kick back and result in injury to the operator.
5. When deep boring - 1" up to maximum of 2" (25~50mm) first use the POWER X-305 to cut from one side of the board, and then start cutting again from the other side until the blades bore through making a doughnut shaped disc as shown in Figures 1, 2, and 3.



**CAUTION!** Be sure to check that all the hex-screws are tightly screwed in before you start cutting. Firmly secure the object you are cutting so it will not rotate. When cutting with a power-drill, keep its speed under 1000 R.P.M. Care must be taken to avoid cutting live wires.